

W&H PEACOCK
AUCTIONEERS & VALUERS

Mid Century Design

Bedford Auction Centre
Friday 16th February | Commencing at 10.30am

Viewing: Friday 9th February 9am to 8pm
Saturday 10th February 9am to 5pm
Thursday 15th February 9am to 5pm
and Morning of Sale from 9am
www.peacockauction.co.uk



1 Douglas Wilson RCA (1936-2021), 'Mid-winter at Raby', signed, oil on board, image 50 x 61 cm
*Provenance: The Douglas Wilson Studio Sale

Est £250 - £300



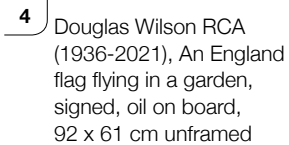
2 Douglas Wilson RCA (1936-2021), 'Brickworks in North Wales', signed, oil on board, image 92 x 61 cm
*Provenance: The Douglas Wilson Studio Sale

Est £200 - £300



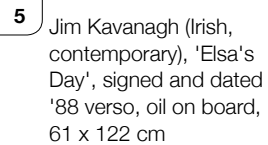
3 Douglas Wilson RCA (1936-2021), Brickworks in Flintshire, signed, oil on board, 50 x 60 cm unframed
*Provenance: The Douglas Wilson Studio Sale

Est £200 - £300



4 Douglas Wilson RCA (1936-2021), An England flag flying in a garden, signed, oil on board, 92 x 61 cm unframed

Est £200 - £300



5 Jim Kavanagh (Irish, contemporary), 'Elsa's Day', signed and dated '88 verso, oil on board, 61 x 122 cm

Est £150 - £200





- 6 A Patek Philippe Limoge porcelain and enamel dish, Collection 2006, entitled 'Ornements Moyen-Age', 20 x 15 cm, in the original box

Est £80 - £120

- 7 A 1976 Mдина Glass bottle of canted cuboid form with a slender neck, signed, h. 18 cm

Est £40 - £60

- 8 A Poole Pottery charger decorated in the Delphis manner with an orange ground and stylised motifs, di. 26.5 cm

Est £50 - £80



- 9 Pure Evil (aka Charles Uzzell-Edwards, London street artist, b. 1968), A creature and animals over a city, signed and numbered 99/150, Stella blind stamp, image 83 x 54 cm

Est £50 - £80

- 10 A late 20th century white moulded chair with a red fabric upholstered interior, on a circular base, after 'The Ball Chair' designed in 1963 by Eero Aarnio *SFP

Est £200 - £300



11

11

An illuminated 1970's lucite etagere or stand with a 'frozen ice' plinth and rim, 79 x 44 x 168 cm
*Originally in the Lady Jane Boutique, Carnaby Street, London

Est £200 - £300



12

12

Charles & Ray Eames for Vitra, an Aluminium Group office armchair with tan upholstery, chromed frame and four-star base *SFP

Est £200 - £300



13

13

Charles and Ray Eames for Herman Miller, a pair of late 1950'6s/early 1960's Aluminium Group EA116 armless chairs upholstered in aubergine/brown vegan leather with four-star bases, the frames with moulded Herman Miller marks and Patent No. 3041109 3024068 (2) *SFP

Est £800 - £1200



14

- 14 A set of Hollywood Regency nesting occasional tables by Maison Jansen, the brass frames supporting smoked glass surfaces, max. 56 x 46 cm

Est £100 - £150

- 15 A pair of stacking cantilever reception chairs by Kusch Co. with blue upholstery and chromed frames *SFP

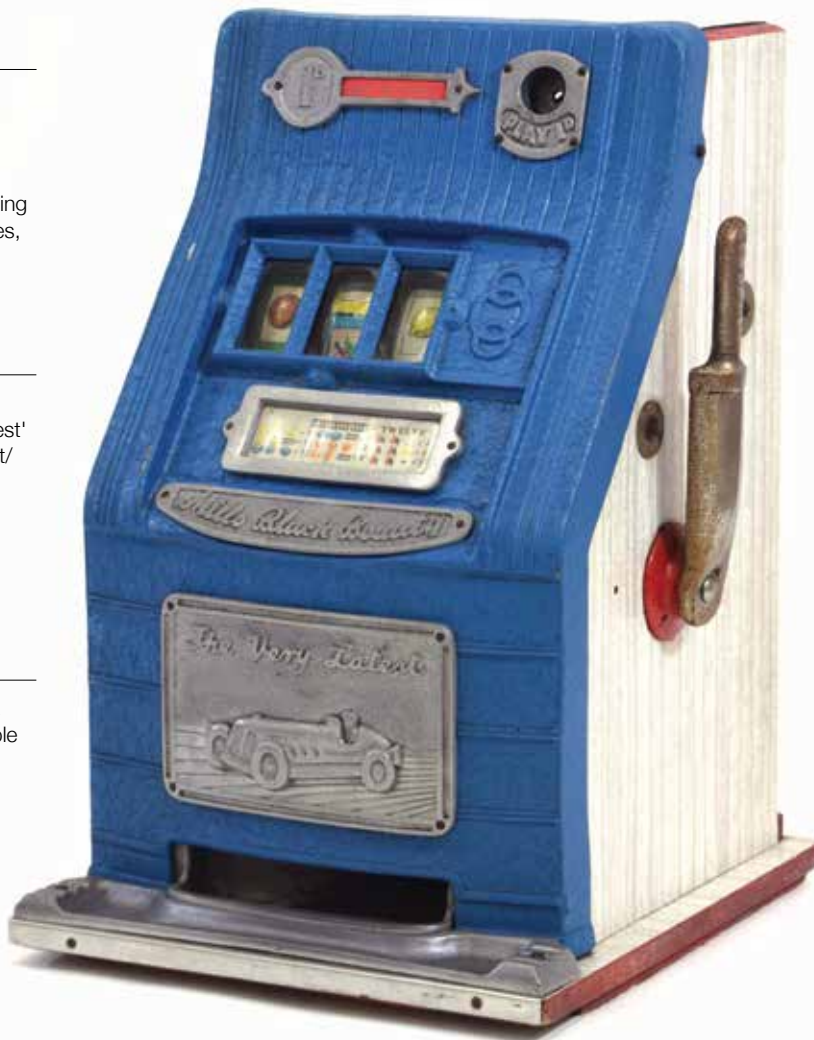
Est £50 - £80

- 16 A 1950's Mills Black Beauty 'The Very Latest' one armed bandit fruit/slot machine Sale Permit: MLB217A

Est £200 - £300

- 17 A 1970's Danish teak rectangular coffee table by Brdr Furbo, 90 x 48 cm

Est £40 - £60



- 18 A 1970's Danish brown leather three-seater sofa on mahogany legs *SFP

Est £100 - £150



- 19 A 1950/60's black wirework folding trolley with two teal circular detachable trays, di. 46 cm

Est £40 - £60

- 20 A 1950/60's red enamelled Danish ceiling light with brass fittings

Est £30 - £50



- 21 Rachel Jack (contemporary), Crashing waves, oil on canvas, 70 x 180 cm

Est £40 - £60

- 22 Attributed to Jeff Hoare (1923-2019), The Thames, signed J. Hoare,, oil on canvas, image 74 x 100 cm

Est £60 - £100



23 Jens Quistgaard for Kronjyden Nissen, a set of three 1960's teak nesting occasional tables with exposed joints and circular decorated sides, smallest with maker's stamp, max. 51 x 37 cm

Est £400 - £600



24 Robert Heal for Staples of Cricklewood, a teak modular 'Ladderax' shelving system including five black metal uprights, a w. 59 cm bureau, three w. 59 cm shelves, four w. 44 cm shelves, four w. 105 cm shelves and the associated cross-members (Qty)

Est £300 - £500

26 A Danish aluminium ceiling light with a central moulded glass pillar

Est £40 - £60

27 A 1970's Danish three-tier ceiling light in the manner of Louis Poulsen with lilac and white enamelled shades, by Form Light

Est £50 - £80

25 Attributed to Charles and Ray Eames for Hille, a 1960's 'Lounger and Ottoman' with rosewood shells and black leather upholstery (2) *CITES Article 10 Transaction Specific Ref: 24GBA10HXIKBB *SFP

Est £1,200 - £1,500

28 A Danish 'Model Young' white enamelled ceiling light with a pink inner shade

Est £40 - £60

29 A pair of 1970's
Danish Type 733 white
enamelled ceiling lights
by Horn

Est £80 - £120

30 A Danish blue and lilac
enamelled squat ceiling
light

Est £30 - £50



31



31

After George Nelson, a 'Coconut' style lounge chair, the white fibreglass shell with a black padded seat, originally designed in 1955 *SFP

Est £200 - £300

32

In the manner of Tom Dixon, a pair of woven 'S' style chairs with black tubular frames

Est £100 - £150

32



33

A 1970's Remploy Furniture teak coffee table with a second slatted tier, 106 x 44 cm

Est £20 - £30

34

A McIntosh Furniture teak sideboard with an arrangement of two doors and three drawers on later legs, w. 122 cm

Est £150 - £200



35 A 1960's Danish oak two door cupboard with a circular inset handle, Bramin System 160 Range, label to the rear, on later legs, 100 x 47 cm

Est £100 - £150



36 A 1960's teak single drawer side/console table with two drawers and curved handles, on later slender tapering legs, w. 80 cm

Est £80 - £120

37 A 1960's Danish teak single drawer side/console table with two drawers and moulded handles, on later slender tapering legs, w. 80 cm

Est £80 - £120

38 A 1960's teak chest of three drawers with moulded handles, on later legs, w. 59 cm

Est £80 - £120



39 A 1960/70's teak four-drawer chest with brass tubular handles, on later legs, w. 46 cm

Est £80 - £120

40 A 1970's Swedish teak cabinet with two sliding doors, on later legs, w. 80 cm

Est £80 - £120

- 41 Otto Nielsen (Danish, 1916-2000), Byparti, Kobenhvn, Vinter (Copenhagen Winter), signed, oil on canvas, image 53 x 61 cm

Est £80 - £120



- 42 C. Blume (Scandinavian), A winter's street scene, signed, oil on canvas, image 65 x 50 cm

Est £40 - £60

- 43 1960's School, Fishing boats on a blue ground, indistinctly signed, oil on canvas, image 59 x 68 cm

Est £30 - £50



- 44 Allan Karms (Danish, b. 1933), A harbour scene, signed, oil on canvas, image 41 x 84 cm
*In 1952 Karms received a first class with distinction at the Technical School of Painting in Copenhagen under the patronage of King Frederik IX and Queen Ingrid.

Est £80 - £120



45

45

Haizlip (late 20th Century), Abstract figures in a street, indistinctly signed, oil on canvas, image 59 x 69 cm

Est £60 - £80



46

A set of three late 20th century moulded blue glass pendant lights (3)

Est £60 - £80

47

A pair of late 20th century blue enamel and perspex wall lights

Est £30 - £40

48

A small spun aluminium four-tier ceiling light in the manner of Louis Poulsen

Est £40 - £60

49

A late 20th century Danish metallic and brass finished pull-down ceiling light

Est £30 - £50

50

A 1980's yellow and smoked perspex spherical ceiling light, together with a mustard ceiling light (2)

Est £40 - £60



51 A 1970's Danish orange enameled ceiling light
Est £30 - £50

52 A 1950/60's Danish enameled ceiling light of trumpet form
Est £30 - £50

53 A Danish red enameled industrial-type ceiling light
Est £30 - £50

54 A 1970's Danish white enameled three-tier ceiling light by Jeka
Est £50 - £80

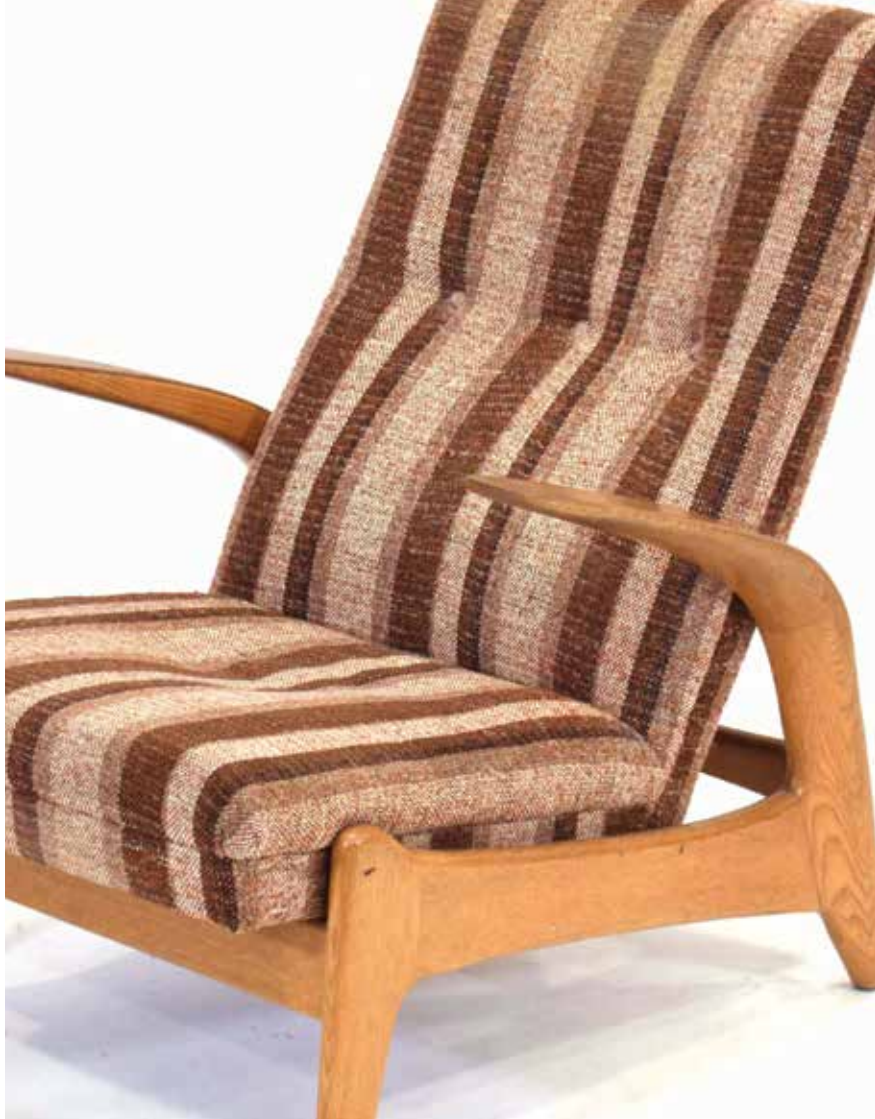


55 A Danish white enameled large open ceiling light
Est £40 - £60

56 A Danish brass and aluminium finished open ceiling light of trumpet form
Est £30 - £50



57 A pair of 1970/80's Danish brass piercework ceiling lights of conical form
Est £40 - £60



58 A 1970's Danish brass finished ceiling light of squat form with moulded geometric panels to the side

Est £50 - £80



58

59 A pair of 1970's Danish brass-work ceiling lights mounted with glass panels and inner glass shades

Est £80 - £120

60 A small pair of 1970's Danish brass work ceiling lights mounted with glass panels

Est £60 - £80

61 Adolf Relling & Rolf Rastad for Gimson & Slater, a 1960's 'Rock n Rest' armchair with an oak frame and teak detail to the boomerang arms *SFP

Est £200 - £300

62 Martin Visser (Dutch, 1922-2009), a 1960's sofa bed with a matt chromed frame, manufacture attributed to Spectrum *SFP

Est £600 - £800



63 Martin Visser (Dutch, 1922-2009), a pair of SZ38 easy chairs with leather slung arms, manufacture attributed to Spectrum *SFP

Est £300 - £500

64 Ligne Roset for Heal's, a 'Pont' glass coffee table, single sheet of moulded and carved glass, 60 x 106 cm

Est £100 - £150

65 A set of three Heals moulded glass nesting tables, circa 2003, max. 53 x 50 cm

Est £80 - £120



66 A 1940/50's studio pottery bowl depicting stylise figures with hands in the air, impressed G mark to the underside, possibly Glover, di. 18.5 cm

Est £60 - £80



67 Francoise de la Perriere for Hermes, an Etriers scarf, 90 x 88 cm

Est £80 - £120

68 Erik Hoglund for Boda, a Swedish 'Ice Man' sculpture, inscribed B. 41256, h. 8 cm, together with another smaller (2)

Est £40 - £60



69 A French 'opaline de cristal' pink glass table centre y Perre Schneider, Paris, with labels, h. 26 cm

Est £30 - £50



70 A yellow cased-glass table centre of organic form, in the manner of Murano, h. 29 cm, together with a similar dish (2)

Est £40 - £60

71 A copper panel relief decorated with tribal figures, image 22 x 15 cm, together with a Pitcairn Island tourist vase, circa 1900, and a chalkware figure (3)

Est £40 - £60

72 Michael Boehm for Rosenthal studio-Line, a suite of Rosenthal 'Papyrus' glass (13)

Est £30 - £40



73 A group of Jonathan Harris Studio Glass (Ironbridge) including three scent bottles, a spill vase and bowl, all signed or labelled (5)

Est £80 - £120

74 A pair of large green glazed plates by William Fishley Holland, signed, di. 37 cm

Est £40 - £60

75 A 1950/60's French copper finished six-branch ceiling light together with matching wall lights

Est £50 - £80



76 A 1960's Danish teak cabinet with two sliding doors, on later tapering legs, w. 80 cm

Est £60 - £100

77 A 1970's teak cabinet with two glazed doors, on later tapering legs, w. 81 cm

Est £60 - £100

78 A pair of 1970's teak four-drawer chests on later tapering legs, w. 102 cm each (2)

Est £200 - £300

79 In the manner of Poul Hundevad, a 1970's cherry and crossbanded cabinet, the two chambered doors enclosing lined drawers and shelves, on later legs, w. 120 cm

Est £200 - £300

81 Arne Jacobsen for (Republic of) Fritz Hansen, a 2001 'Swan' chair upholstered in red, FH label to the underside and moulded markings to the base *SFP

Est £800 - £1,200



80 A 1960's Danish teak cabinet with two sliding doors, on later slender tapering legs, w. 80 cm

Est £80 - £120

82 A Fontana Arte 'Nobi Terra Quatro' 3599 chrome floor lamp with tilting and rotating shades, h. 185 cm, with the paperwork

Est £250 - £350





83



83

Jasper Morrison for Cappellini, a 'Plan' Range pink lacquered single-door cabinet with stainless handles and feet, designed in 1999, 60 x 60 cm, h. 71 cm

Est £400 - £600

84

Carl Jacobs for Kandya, a set of four 1950's C3 stacking chairs with overpainted bent ply backs and metal tubular legs

Est £200 - £300



- 85 A pair of 1960/70's Cornish lamp bases by Tremaen Pottery Newlyn, h. 41 cm excl. fittings

Est £80 - £120

- 86 Johannes Andersen for Silkeborg, a 1960's rosewood and black laminate three-tier trolley or bar cart, badge to the underside, 73 x 48 x 70 cm CITES Article 10 Reference: 23GBA10BS592B

Est £150 - £200

- 87 An American lucite bag by Charles S. Kahn Inc. of Miami, Florida, together with another similar bag (2)

Est £80 - £120



- 88 In the manner of Stefano Toso and Walter Furlan for Murano Glass, a jug modelled as a Picasso-style grotesque face, ground pontil mark, h. 21 cm

Est £150 - £200

- 89 Vicke Lindstrand for Orrefors, a Stella Polaris clear glass vase, no. 2251/3, h. 13 cm, together with a similar Orrefors dish (2)

Est £60 - £80



- 90 A Danish 'Krenit' Range black bowl with a red enamelled interior, di. 25 cm

Est £30 - £40

- 91 A group of six Danish teak trays including one by 'Silva' together with a pair of teak cuboid modular tealight holders (8)

Est £50 - £80

- 92 A Dutch concertina/accordion trivet by Tomado, together with a pair of Old Hall toast racks, a pair of Georg Jensen fondue/cocktail forks, ten Dansk knives, forks and spoons, a further Norwegian slice and a panel of flat weave fabric (17)

Est £50 - £80

- 93 A Danish teak lattice tray with nine detachable moulded glass dishes, designed by Jens Quistgaard, 44 x 34 cm

Est £80 - £120

- 94 A Danish beech serving tray with two moulded glass dishes by Digsmed, together with four other unmarked teak and beech serving sets (5)

Est £50 - £80

- 95 A Swedish scissor arm wall light with a teak body and brass fittings, paper label to the rim, together with a further teak scissor arm wall light (2)

Est £60 - £100

- 96 A pair of 1978 Royal Copenhagen Fajance mugs with 925 silver caps to the underside, together with a 1989 Fajance mug (3)

Est £50 - £80



97 A collection of Norwegian, Swedish and Danish tablewares by Figgjo, Rorstrand, B&G etc. (Qty)

Est £40 - £60

98 A 1960's Danish teak cupboard with two sliding doors, on later legs, w. 80 cm

Est £80 - £120

99 A 1960's teak bookcase, the open gallery over a pair of glass sliding doors, on later legs, w. 100 cm

Est £100 - £150

100 A 1970/80's Danish cherry and crossbanded cabinet in the manner of Dyrlund, the interior with a fitted drawer and single adjustable shelf, on later legs, w. 120 cm

Est £150 - £200



101 A Danish spun aluminium ceiling light with an opaque glass inner shade

Est £30 - £50

102 A 1980's Danish orange enamelled and spun aluminium banded ceiling light

Est £30 - £50



103 A 1970's aluminium ceiling light with yellow circular perspex motifs

Est £30 - £50

104 A 1970's Danish white enamelled three-tier ceiling light in the manner of Louis Poulsen

Est £40 - £60

105 A 1970's Danish white enamelled low open ceiling light

Est £30 - £50

106

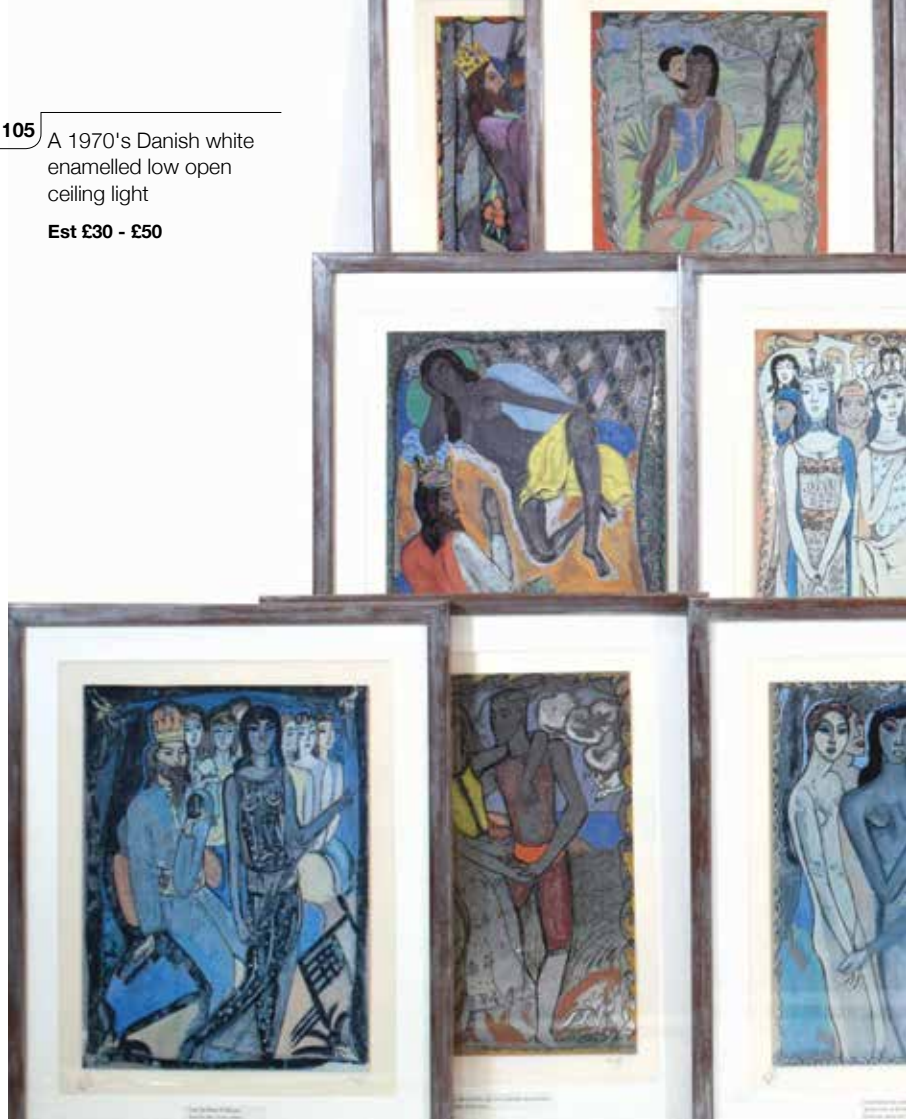


106 Joan Jefferson Farjeon (1913-2006), 'Female Eastern Dancer', signed and inscribed, gouache and pencil, 37 x 26 cm, together with seven further costume designs by the same hand (8)

Est £200 - £300

107 Edward Wolfe (1897-1982), 'Song of Songs' a set of twelve limited edition lithographs, each signed in pencil and numbered 227/250, 35 x 26.5 cm (12)

Est £200 - £300





- 108 John Frederick Black (b.1943), 'The Primrose Bank', signed, acrylic on canvas, 59.5 x 59.5 cm

Est £40 - £60

- 110 'Artcurial': a group of six French auction catalogues, together with 1997 Christie's Review of the Year etc. (10)

Est £30 - £50

- 111 After David Hockney (b.1937), 'Le Nid du Duc, May 1971', colour lithograph, image 60 x 45 cm

Est £300 - £500



- 109 'Passion... Vingt ans de Sponsoring', Conception Graphique: Philip Hartley Peter Stimpson, Imprime A Lausanne En Suisse (a book of racing photographs)

Est £30 - £50





- 112** A bronzed panther coffee table, the figure intersecting the glass table top, resting on marble bases, 135 x 75 cm

Est £400 - £600

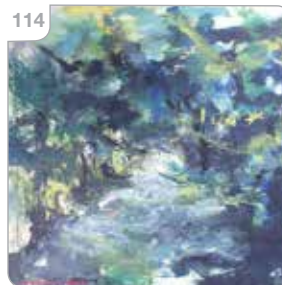
- 113** F.B. Elledge (Danish), An abstract still-life with stairs and glasses, indistinctly signed and dated 1992, oil on board, image 49 x 69 cm

Est £60 - £80



- 114** 1960's Danish School, Yellow, blues and blacks, indistinctly signed Mogens..., signed verso Rur... Hoffmann, oil on canvas, image 62 x 72 cm

Est £60 - £100



- 115** L.H. (Danish School), Boats at harbour, initialled, oil on canvas, image 50 x 67 cm

Est £30 - £50

116 1960/70's Danish School, A series of coloured shapes, unsigned, oil on canvas, image 53 x 63 cm

Est £60 - £80

116



118 A 1970's brown enamelled twin-spot standard/floor lamp

Est £50 - £70

119 A 1970's Danish brass coloured twin-spot standard/floor lamp

Est £50 - £70

119



120 A 1970's Danish black enamelled twin-spot standard/floor lamp

Est £50 - £70

117 A 1960's Danish undulating teak standard/floor lamp

Est £40 - £60

118



121 Niels Koefoed for Koefoeds Hornslet, a set of six 1960's Danish teak 'Eva' dining chairs, stamped *SFP

Est £300 - £400



122 A 1960's Danish teak and crossbanded extending dining table, with two leaves, by Gudme Mobelfabrik, stamped *SFP

Est £80 - £120



123 An Ercol elm two-tier wall-mounted plate rack, w. 97 cm

Est £50 - £70

124 Kadj (Contemporary, Danish), A collection of forty-three artworks, oil on canvas, each 50 x 50 cm (43)

Est £200 - £300



- 125** A bay of Swedish 'String System' shelving including a pair of waterfall uprights (approx. 195 cm) in burnished brass, five deep and five shallow shelves in black ash (w. 76 cm)

Est £150 - £200



- 126** A bay of Swedish 'String System' shelving including a pair of waterfall uprights (approx. 195 cm) in burnished brass, five deep and five shallow shelves in black ash (w. 76 cm)

Est £150 - £200

- 127** A bay of Swedish 'String System' shelving including a pair of waterfall uprights (approx. 195 cm) in brass, four deep and five shallow shelves in black ash (w. 76 cm)

Est £150 - £200

- 128** A bay of Swedish 'String System' shelving including a pair of waterfall uprights (approx. 195 cm) in white, five deep and four shallow shelves in teak (w. 76 cm)

Est £150 - £200

- 129** A bay of Swedish 'String System' shelving including a pair of waterfall uprights (approx. 195 cm) in white, four deep and five shallow shelves in teak (w. 76 cm)

Est £150 - £200

- 130** A pair of 1960's afromesian teak lounge armchair frames by R.W. Toothill of Newton Aycliffe

Est £600 - £800

131



131

A 1970's aluminium ceiling light of open form with rectangular pierced slots

Est £30 - £40

132

A 1970's Danish Type 738 white enamelled pull-down ceiling light by Horn

Est £30 - £50

133

A 1970's Danish cream enamelled pull-down ceiling light

Est £30 - £40

134

A late 20th century Basic 500 Type 41102 white enamelled ceiling light

Est £40 - £60

136



135

A Danish cream enamelled four-tier ceiling light in the manner of Louis Poulsen

Est £40 - £60

136

1960/70's Danish School, A snowy street. initialled KMP, oil on canvas, image 38 x 42 cm

Est £40 - £60

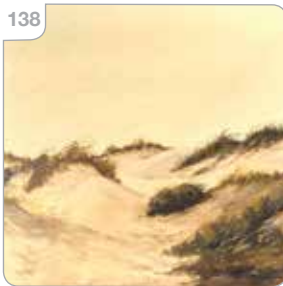
137 Arling Gade (Danish, 1920-2010), A nude lady clutching a gown, signed, oil on board, image 72 x 49 cm

Est £60 - £80



138 K.F. Andersen (Danish), A sandy beach scene, signed, oil on canvas, image 39 x 49 cm

Est £20 - £30



139 1960/70's School, A Continental harbour scene, unsigned, oil on canvas, image 59 x 47 cm

Est £30 - £50





140



140

A 1950's Norwegian charger decorated with fishermen holding their nets, impressed Norsk mark and ink '395 217.D' marks, di. 36 cm

Est £50 - £70

141

Vicke Lindstrand for Kosta, a 1950's glass vase, the clear body with a deep purple band, inscribed 'Kosta LH 1242', h. 13 cm

Est £40 - £60

142



142

KE Palmberg for Alton, a set of five large and four small FD10 pewter bark-design cups, retailed by Svenskt Tenn (9)

Est £60 - £80

143

Attributed to Erik Hoglund for Boda Glasbruk/Boda Smide, a 1960's Swedish cast iron chandelier with four glass droplets

Est £80 - £120

144

A 1960's Swedish teak table lamp base by Tranas Stilarmatur AB, bearing the paper label, h. 38 cm incl. fitting

Est £50 - £80

- 145** A 1970's Czech opaline glass pendant light

Est £40 - £60



- 146** A 1950/60's Swedish bankers-style wall lamp, the brass shade holding an adjustable pierced blue shade, marked 'FA 1900', with S label to the bracket

Est £60 - £100

- 147** Royal Copenhagen for Fog and Morup, a large 'Tidsel' (Thistle) lamp designed by Kaj Lange, E 7166, h. 54 cm incl. fittings

Est £80 - £120

- 148** A pair of 1950/60's pottery figures modelled as seated giraffes with blue or orange polka dots, signed F.H., h. 12 cm (2)

Est £40 - £60

148



- 149** Einar Lutherkort (1905-1981) for Upsala Ekeby, a 1930's Swedish 'Jazz' charger in orange, d. 33 cm

Est £40 - £60

- 150** A pair of Danish two-branch figural candlesticks modelled as nude figures, originally retailed by Laurids Lonborg, h. 23 cm (2)

Est £30 - £40



152 A late 20th century industrial-type ceiling light with a blue enamelled body

Est £30 - £40



151 A late 20th century squat pendant light with a brown enamelled body

Est £30 - £40

153 A 1970's Danish faux-rosewood and brass ceiling light

Est £40 - £60

154 A late 20th century green metallic pendant light

Est £30 - £40

155 A small Danish white enamelled six-tier ceiling light

Est £30 - £50

156 A 1970's Danish brown enamelled standard/floor lamp with an adjustable shade

Est £30 - £50

157 A 1970's Danish brass finished standard/floor lamp with an adjustable shade

Est £30 - £50

158 A 1970's Danish standard/floor lamp with an aluminium shaft and white enamelled adjustable shade

Est £30 - £50

159 A 1970's Danish standard/floor lamp with a single brown enamelled adjustable shade

Est £30 - £50

160 A 1970's Danish standard/floor lamp with a brass finished shaft and brown enamelled adjustable shade

Est £30 - £50

161 Sarra Hopea for Nuutajarvi, a group of three 'Nuppyla' bowls in blue and clear glass, di. 15 cm (3)

Est £50 - £80

162 A group of three Lisa Larson 'dove' planters (3)

Est £50 - £80

163 A group of three Swedish glass dishes relief moulded with a nude figure and bulls, by Erik Høglund (3)

Est £40 - £60

164 A pair of Swedish white enamelled wall lights, the shades adjusting to become downlights or uplighters, on chromed shafts, by Elidus, Type 7107

Est £60 - £100



165 Lars Norman (Swedish, 1915-1979), Ladies mending net by the sea, signed and numbered 63/310, screenprint, image 29 x 45 cm

Est £80 - £120



166 Louis Bastin (Swedish, 1912-1979), An artist at work in an attic room, signed and numbered 109/310, etching, image 34 x 38 cm

Est £30 - £50

167



167

Axel Birkholm (Swedish, 1909-84), Geese in a farmyard, signed and numbered 104/260, coloured print, image 41 x 57 cm

Est £40 - £60

168

Einar Rosén (Swedish, 1910-1988), Faces in a vanity mirror, signed and numbered 136/310, print on tissue paper, image 42 x 28 cm

Est £30 - £50

168



170

A group of 1950/60's studio pottery by various makers including a large two-handed brown glazed container attributed to Patty Elwood, a tall brown glazed cylindrical vase etc. (10)

Est £200 - £300

170



169

Andre Minaux (French, 1923-1986), A nude figure in a yellow surround, signed artist proof, numbered 2/25, image 63 x 46 cm

Est £80 - £120

169



171 A late 20th century Danish white enamelled ceiling light of industrial form
Est £30 - £40

172 A Danish black enamelled ceiling light with a copper finished shaft
Est £40 - £60

173 A 1970's Danish cream enamelled three-tier ceiling light in the manner of Louis Poulsen
Est £40 - £60

174 A 1980's Danish orange and pale brown ceiling light by Lyskaer
Est £20 - £30



175 A small Danish spun aluminium ceiling light
Est £20 - £30

176 A 1970's Danish brass finished ceiling light with moulded panels and a perspex diffuser
Est £30 - £50

177 A Danish twin-spot standard/floor lamp with black enamelled shades and an aluminium shaft
Est £30 - £40

178 A Danish twin-spot standard/floor lamp with black enamelled shades and a black shaft
Est £30 - £40

179 A Danish twin-spot standard/floor lamp with brown enamelled shades and a black shaft
Est £30 - £40

180 A Danish single-spot standard/floor lamp with a black enamelled shade and matching shaft
Est £30 - £40



illustrated: lot 183. 188

181 A 1972 cut-down
'Deliverance' film poster,
68 x 52 cm

Est £30 - £40

182 Textiles: a collection of
fabric off-cuts and panels
including Marimekko,
Lucienne Day style etc.
together with an African
batik panel (Qty)

Est £60 - £100

183 Ingeborg Seidelin
(Danish, 1872–1914),
A head and shoulders
portrait of a young lady
looking into the distance,
signed and dated 1906,
indistinct pencil markings
verso, oil on canvas,
image 54 x 42 cm

Est £150 - £250

184 1960's Scandinavian School, A head and shoulders portrait of a lady, indistinctly signed, oil on board, image 44 x 30 cm

Est £100 - £150

186 Gertrud Thankus (Swedish, 1921-1965), A head and shoulders portrait of a young lady, signed and dated 62, coloured print, image 41 x 29 cm

Est £30 - £40

187 Jules Schyl (Swedish, 1893-1977), A figure of a young lady within a landscape, signed, monochrome print, image 34 x 30 cm

Est £40 - £60

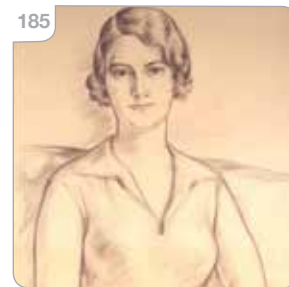


188 Hellstrom (Swedish, late 19th/early 20th Century), A half-length Art Deco portrait of a young lady, signed and dated 1928, pastels, image 66 x 49 cm

Est £100 - £200

185 Lasse Johnsson (Swedish, 1899-1992), A half-length portrait of a seated young lady, signed and dated 1930, image 64 x 47 cm

Est £50 - £100



189 Waldemar Sjolander (Swedish 1905–1988), A mother and child, signed, lithograph, image 65 x 46 cm

Est £100 - £150

191 A set of twenty-five 1970's beech framed side/dining chairs designed by Benchairs of Frome, some bearing Thurston & Co. Hotel & Club Furniture badges (25) *SFP

Est £300 - £500



190

190 Finnish School, A colourful outfit, textiles and oil on board, initialled M.C., image 81 x 56 cm

Est £60 - £80

192 A set of four Danish beech and burgandy steel stacking chairs by Randers, bearing labels (4)

Est £40 - £60



191

193 A 1960's Welsh steamed wood and bamboo folding lounge chair and ottoman designed by David Colwell

Est £60 - £100



193



Mid-Century Design Soft Furnishings Policy

The Furniture and Furnishings (Fire) (Safety) Regulations 1988 (as amended in 1989 and 1993) state that all soft furnishings holding foam must conform to BS 5852 standards. This means that any post-1988 furniture will need to bear a fire label for auction purposes.

The following exceptions apply:

- Items constructed pre-1950. [Regulation 4(a)]
- Items being sold to someone who is in the business of reupholstering furniture. [See Regulation 4[b] and Consumer Protection Act 1987, s.46(7)]
- Items being sold to someone who is in the business of dealing in furniture. [Regulation 14(1)]
- Items being sold that will not be used in a domestic setting in the UK; e.g. for export, for use in a museum or theatre, as a work of art. [Regulation 3(1a) and 4(c)]

The Mid-Century period has been recognised as an area of increased interest to collectors for many years now. The relevant soft furnishings in our sales have been carefully selected to be collector's pieces which are purchased for their design qualities.

Soft furnishings in this sale are being sold as collector's items and are NOT intended for private use in the UK. They may not be in compliance with the Furniture & Furnishings (Fire)(Safety) Regulations 1988 and should be re-upholstered to conform to BS 5852 prior to any use in a domestic dwelling.

Bids are only accepted on the agreement that the furnishings will not be used in a domestic dwelling in the UK.

This policy is in-line with all major UK auctioneers and the Mid-Century trade.

194



194

Ole Wanscher for Poul Jeppesen, a 1960's Danish mahogany and upholstered lounge armchair, bearing badges to the underside *SFP

Est £300 - £400

195



195

A 1970's Norwegian chromed and leather button upholstered lounge armchair by Ekornes *SFP

Est £150 - £200

196

A 1960's Danish three-seater sofa upholstered in blue check with teak splayed legs, attributed to Georg Thams *SFP

Est £400 - £600

196



197 A 1950's Danish button upholstered three-seater sofa on mahogany block feet *SFP

Est £300 - £400

198 A 1940's Danish ruby red 'banana' sofa with brass studs and beech square feet *SFP

Est £300 - £500



199 A 1960's Danish curved or 'banana' sofa with large angular arms and oak triangular legs *SFP

Est £300 - £400

200 A 1950's aluminium and red vinyl upholstered desk or elbow chair by Tan-Sad, on a four-star swivel base with castors, frame manufactured by BIRMAL (Birmingham Aluminium Castings Co.) *SFP

Est £150 - £200



201 Two 1970's Danish standard/floor lamps with brown enamelled shades (2)

Est £40 - £60

202 Two 1980's Danish white twin-spot standard/floor lamps (2)

Est £30 - £40

203 A 1960's teak and brass finished standard lamp shaft/body, no fittings

Est £30 - £40

204 Jens Lausen (German, 1937-2017), 'Das Endlose Loch', signed, dated 1970 and numbered 68/100, serigraph, image 61 x 50 cm

Est £100 - £200

205 Franco Albini for Sirrah, an Italian chrome-plated pendant ceiling light, Model SH26, designed circa 1968

Est £200 - £300

205



206 Franco Albini for Sirrah, an Italian chrome-plated pendant ceiling light, Model SH26, designed circa 1968

Est £200 - £300

207 Franco Albini for Sirrah, an Italian chrome-plated pendant ceiling light, Model SH26, designed circa 1968

Est £200 - £300

208 Franco Albini for Sirrah, an Italian chrome-plated pendant ceiling light, Model SH26, designed circa 1968

Est £200 - £300

209 Franco Albini for Sirrah, an Italian chrome-plated pendant ceiling light, Model SH26, designed circa 1968

Est £200 - £300

210 Franco Albini for Sirrah, an Italian chrome-plated pendant ceiling light, Model SH26, designed circa 1968

Est £200 - £300

211 Franco Albini for Sirrah, an Italian chrome-plated pendant ceiling light, Model SH26, designed circa 1968

Est £200 - £300

212 Franco Albini for Sirrah, an Italian chrome-plated pendant ceiling light, Model SH26, designed circa 1968

Est £200 - £300

213 Bruno Mathsson for DUX, a pair of 1960/70's Swedish 'Pernilla 2' lounge chairs, the moulded laminate beech frames with canvas supports and chequered upholstered seats with removeable sides and adjustable headrests, DUX markings to the upholstery, maker's stamps to the back rails (2) *SFP

Est £400 - £600



214 A pair of 1960's 'Kroken' lounge chairs designed by Ake Fribytter, the beech moulded frames supporting brown leather upholstery (2) *SFP

Est £300 - £400



215 Rud Thygesen & Johnny Sorensen for Magnus Olesen, a 1960/70's Danish lounge chair with blue fabric upholstery and oak moulded legs, label to the underside

Est £150 - £200

216 A pair of late 20th century Danish black enamelled pendant ceiling lights

Est £40 - £60

217 Stuart Fletcher for Topglass, an art glass jug together with a modern blue glass tapering vase (2)

Est £20 - £30

216



218 A 1987 pottery vase by Jo Connell, together with a pottery charger by Janet Slade of Cambridge and a Cinque vase (3)

Est £30 - £50

219 Richard Young for Merrow Associates, a Model 341 circular occasional table, the glass top resting on a flat chromed base, di. 92 cm, h. 32 cm

Est £150 - £200



220 A pair of Danish-style teak framed open armchairs with pale red upholstered seats, in the manner of Ingmar Relling *SFP

Est £200 - £300



221 A 1960's Greaves & Thomas drop-end sofa or daybed with a teak frame, spindle back and grey cushioned seat *SFP

Est £300 - £400

222 A set of three Danish spindle-back dining/side chairs with steamed rails, together with a further set of three spindle-back chairs (6)

Est £50 - £80

223 A late 1940's DA2 wingback armchair with velour button upholstery and teak legs, designed by Ernest Race for Race Furniture *SFP

Est £200 - £300

224 A late 1940's DA2 wingback armchair with grey button upholstery and teak legs, designed by Ernest Race for Race Furniture *SFP

Est £200 - £300

225 A 1950's button upholstered armchair on ebonised tapering legs, attributed to Howard Keith for HK Furniture *SFP

Est £30 - £50

226 A 1970/80's chromed tubular occasional table with a smoked glass surface, 60 x 60 cm

Est £30 - £40





227 A Swedish wool rya rug, the green round with yellow and brown diamond motifs, 147 x 97 cm

Est £80 - £120

228 A Swedish wool rya rug, the green ground with a bright flower, 150 x 80 cm

Est £60 - £80

229 A Swedish wool rya rug or wall hanging, the cream ground with red and blue diamond motifs, 120 x 60 cm

Est £50 - £70

230 A Swedish wool rya wall hanging, the yellow ground depicting a bright tree, 98 x 61 cm

Est £50 - £70

- 231** A 1950/60's Finnish raana woven textile wall hanging, 140 x 73 cm
Est £80 - £120



- 232** A group of 1970's 'Arabesque' tablewares by Denby (Qty)
Est £50 - £80



- 233** Pearson Lloyd for Walter Knoll, a pair of red fabric 'Oscar' armchairs with adjustable headrests and four-star swivel bases *SFP
Est £300 - £400

- 234** Lord Norman Foster (b.1935) for Walter Knoll, a pair of Model 500 armchairs upholstered in brown leather, on brushed matt chrome plated legs *SFP
Est £300 - £500



235 After Ludwig Mies van der Rohe, a 'Barcelona' style suite including glass-topped table, pair of chairs and a matching ottoman (4) *SFP

Est £200 - £300

236 A set of four Italian 'Coco' chairs by Matteo Grassi (Matteograssi) upholstered in brown saddle leather (6) *SFP

Est £400 - £600

237 Robert Heal for Staples, a 'Ladderax' teak modular shelving system including four wooden uprights (h. 200 cm), three sliding door cabinets (w. 89 cm), two bureaux (w. 89 cm), seven shelves (w. 59 cm) and one shelf (w. 89 cm), with the associated cross-members (three bays)

Est £300 - £500

238 Robert Heal for Staples, a 'Ladderax' teak modular shelving system including two wooden uprights (h. 200 cm), two sliding door cabinets (w. 89 cm), two shelves (w. 89 cm), two white metal uprights (h. 200 cm) and seven shelves (w. 59 cm) (three bays)

Est £250 - £350



239 After Harry Bertoia, a set of four chromed wirework barstools

Est £100 - £150



240 After Ludwig Mies van der Rohe, a 'Barcelona' style daybed with a black padded seat on a matching frame *SFP

Est £150 - £250



240

241 Philippe Starck for Kartell, a set of seven 'Charles Ghost' barstools together with four smaller stools (11)

Est £400 - £600



241

242 After Sir Howard Hodgkin (1923-2017), 'The Sky's the Limit', serigraph, edition of 500, published by The Lincoln Center, 76 x 83 cm

Est £40 - £60



243 Dame Elizabeth Frink RA (1930-1993), 'The Nun Priest's Tale', From a Canterbury Tales set of nineteen prints, circa 1972, Edition of 75, 66 x 47 cm *The original cover page which is not included is signed and numbered C229.

Est £150 - £200

244 Dame Elizabeth Frink RA (1930-1993), 'The Physician's Tale', From a Canterbury Tales set of nineteen prints, circa 1972, Edition of 75, 66 x 47 cm *The original cover page which is not included is signed and numbered C229.

Est £150 - £200

246 After David Hockney (b. 1937), 'Mount Fuji and Flowers', offset lithographic Poster, The Metropolitan Museum of Modern Art, NY, 2016, 87 x 64 cm

Est £40 - £60



247 After David Hockney (b. 1937), 'Capturing the Moment', Exhibition Poster published by The Tate Gallery, 50 x 70 cm

Est £50 - £70

248 After Andy Warhol (1923-1997), 'Marilyn- Orange shot on white background', Edition of 2,000 published by Te Neus in 1992, together with offset-lithograph 'Princess Diana' by the same publisher, 'Georges a Bicyclette' after Francis Bacon, published by Maeght and printed by Arte, 'Fishing' poster after George Dokupil for Leo Castelli's 1986 exhibition (4)

Est £40 - £60

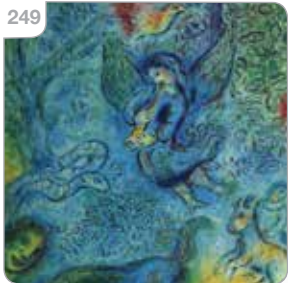


245 After David Hockney (b. 1937), 'Louisiana', Exhibition poster, Museum of Contemporary Art, Denmark, 84 x 60 cm

Est £80 - £120



249



249

After Marc Chagall (1887-1985), four lithograph posters including: 'The Magic Flute (Die Zauberflöte)', produced for the Metropolitan Opera in NY, 'Le Chevauchee' (Horse Ride), produced for Chagall at Pace/Columbus, as above, without text, 'Enlevement de Chloe' (Abduction of Chloe), produced for Chagall at Pace/Columbus (4)

Est £60 - £100

250

Rene Magritte (Belgian, 1898-1967), A group of four 21st century offset-lithographs including: 'Son of man', 'La Magie Noire', 'L;Heureux Donateur' and one other (4)

Est £60 - £100

251

A 1970/80's De Sede brown leather three-seater sofa on block feet, together with a matching armchair *SFP

Est £100 - £200

252

A 1950's Gordon Russell 'Double Helix' R407 sideboard, w. 122 cm

Est £500 - £700



254



253 A 1950/60's chest of five angled drawers, upcycled with a Fornasetti type scene in black and white, on tapering legs with brass caps, w. 77 cm, h. 103 cm

Est £100 - £150

254 Gianfranco Frattini (Italian, 1926-2004) for Bernini, a 1960's Model 522 circular table, the hardwood surface on a bentwood angular base, di. 110 cm

Est £800 - £1200



255



255

A 1950's Franco Albini steel tubular coffee table with rattan insert and glass circular surface, di. 80 cm

Est £100 - £150

256

A 1950's Franco Albini 'Lobster' footstool

Est £50 - £80

258



257

A 1960's Danish beech two-tier teak trolley, 71 x 46 cm

Est £40 - £60

258

Paolo Crescenti for Segis, a set of six 'Nami by Teknion' stacking guest bar stools on chromed tubular frames

Est £100 - £150

259

In the manner of Theo Tempelman, a 1960/70's brown vinyl elbow armchair on tubular chromed legs *SFP

Est £40 - £60



260 A 1970's extendable floor lamp with a white perspex mushroom shade, possibly Italian

Est £200 - £300

261 A 1960's Danish teak bar cart/trolley by Soborg Mobler, badge and paper label to the underside, 70 x 42 cm

Est £80 - £120

262 Charles & Ray Eames for Vitra, a set of four 2018 'Eames Plastic Chair' stacking chairs, the white shells on tubular chromed frames

Est £200 - £300

263 Ronan & Erwan Bouroullec for Vitra, a set of eight 'Softshell' armchairs upholstered in orange, designed in 2008 *SFP

Est £300 - £500

264



264

A pair of 1960's atomic wall mirrors, the oval plates within triple chromed tubular frames, in the manner of Verner Panton, overall 78 x 59 cm each (2)

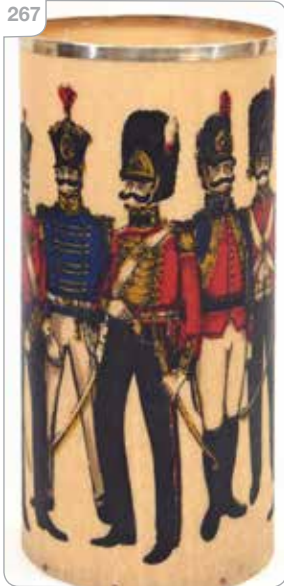
Est £400 - £600

265

A Murano octagonal back-lit wall mirror, the raised plate surrounded by glass modelled flowers, w. 67 cm

Est £300 - £500

267



266

A 1970's hexagonal wall mirror, the circular plate within a red velvet ground, w. 61 cm

Est £30 - £40

267

David Whitehead for Heals, an umbrella stand decorated with guardsmen, h. 52 cm

Est £40 - £60





268 Attributed to Tibor Reich (1916-1996), a fabric panel depicting three rows of houses, 79 x 28 cm
Est £60 - £100

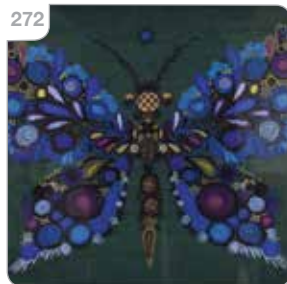
269 A Danish teak wall shelf with brass tubular supports, w. 74 cm
Est £30 - £50

270 A silkscreen print on calico wall hanging by Judy Evans depicting a motorcyclist signed Lloyd Bros, 99 x 144 cm
Est £60 - £80

271 Uno and Osten Kristiansson for Luxus, a Swedish (Vittsjö) circular adjustable table mirror on an aluminium tripod stand, di. 28 cm
Est £60 - £80



272 A 1970's crewel needlework panel from a Penelope 'Papilio' kit, designed by Joyce Conway Evans, image 37 x 51 cm, framed and glazed
Est £50 - £80



273 Tibor Reich (1916-1996) for The Shakespeare Birthplace Trust, a pair of 1969 cotton curtains designed for the Garrick Jubilee 1769-1969, approx. 203 x 106 cm each
Est £100 - £150



274 After Georges Braque (1882-1963), two exhibition posters published by Galerie Maeght, together with a Mark Rothko off-set lithograph 'Blue and Grey', edition of 800, and a Rothko poster 'Celebration D'Art' (4)

Est £60 - £100



276 After Robert Motherwell (American, 1915-1991), 'Art Chicago', lithograph, edition of 2000, together with Bruce Nauman 'Fifteen pairs of hands' poster, Antonio Tapiés offset lithograph poster for Galerie Maeght, and Piet Mondrian 'Windmill at Night' poster (4)

Est £40 - £60

275 After Alexander Calder (American, 1898-1976), 'La Grenouille et la Scie' (Large), Exhibition poster for Pace/Columbus 1971, together with a Jim Dine offset lithograph 'Still Life', Hans Hoffman 'Landscape Works on Paper', edition of 2,000, and Freud 'Man at Night - Self Portrait' poster (4)

Est £40 - £60



277 After Roy Lichtenstein (1923-1997), 'Reflections on Crash', offset lithograph poster, together with David Levine 'Aquarelles', edition of 1000 published by Galerie Claude Bernard, Paul Klee 'Erinerung an einen Gart (1986)', and Richard Answager 'At Castelli's', edition of 800, designed by Smith Florence Inc (4)

Est £40 - £60

- 278** A pair of 1950's stacking stools with black steel tubular legs, brass feet and rattan seats
Est £40 - £60

- 279** A 1970's Italian Veca pendant chandelier, the chrome structure holding Murano green glass panels, h. 31 cm
Est £200 - £300



- 280** A Hollywood Regency cut crystal and gilt brass mounted table lamp base, h. 59 cm
Est £60 - £80

- 281** A group of eleven design reference books
Est £30 - £50



282 A Poole Studio dish decorated in white and green shades with a fish, di. 13 cm

Est £40 - £60



283 An AVeM Murano 'Tutti Frutti' millefiori art glass dish, di. 12 cm

Est £30 - £50



285 A Murano Sommerso multi-faceted triple-cased glass vase, h. 17 cm, together with two small Murano dishes (3)

Est £60 - £100

284 An Otto Brauer 'Gul' vase in smoked grey, h. 31 cm, together with another 'Gul' vase with handle (2)

Est £40 - £60

286 A Murano triple-cased glass sculpture moulded as a toucan in green and orange, h. 22 cm

Est £50 - £80

287 An Italian Empoli glass genie bottle in blue, h. 40 cm

Est £30 - £40

288 Attributed to Bernard Rooke, a pottery vase of cylindrical form decorated with a central geometrically incised band, h. 44 cm, together with another smaller vase (2)

Est £80 - £120



290



289 An American Starbay six-section modular stacking cabinet with a glazed drop-down door, twelve reversible drawers, fall-front cabinet and two pairs of colonial-style doors, with leather handles, 70 x 152 cm

Est £800 - £1200

290 Lord Norman Foster for Tecno, a 'Nomos' circular meeting table, the glass surface resting on a four-star chrome base, di. 120 cm

Est £400 - £600



291 A 1970's Danish tan leather reclining armchair by Berg Furniture with a matching headrest and five-star swivel base *SFP

Est £200 - £300

292 Lucian Ercolani For Ercol, a 1960's elm single-drawer writing table or desk, on beech splayed tapering legs, w. 68 cm

Est £300 - £500

293 A 1960's prototype table lamp designed by Peter Nelson, the adjustable conical shade supported by a straight aluminium shaft and circular base

Est £200 - £300



294 Attributed to Renato Zevi for Romeo Rega, a 1970's Italian table, the square smoked glass surface resting on a chromed and brass table base, 91 x 91 cm, h. 42 cm

Est £200 - £300

295 After Ludwig Mies van der Rohe, a 'Barcelona' type stool, the flat steel frame supporting a black button upholstered seat, unsigned *SFP

Est £80 - £120

296 A pair of 1960/70's long stitch or crewel work panels depicting bamboo on grey grounds, image 156 x 56 cm each (2)

Est £100 - £150



297 A 1960/70's needlework embroidery depicting a stylised flower on a hessian-type ground, image 100 x 24 cm

Est £40 - £60



Hammer Prices - Bedford, November 2023 Sale

1	£75	51	£50	100	£500	146	£480	201	£200	251	£30	297	£750	336	£110	368	£80
2	£45	53	£160	102	£35	147	£200	202	£65	252	£45	298	£850	337	£1200	369	£85
3	£65	54	£50	103	£28	148	£28	203	£35	253	£28	299	£80	338	£460	370	£35
4	£55	57	£280	104	£28	149	£90	204	£45	255	£100	300	£30	339	£220	371	£55
5	£100	58	£100	105	£90	150	£400	205	£35	256	£60	301	£150	340	£280	372	£85
6	£45	59	£180	106	£28	151	£45	206	£22	257	£45	303	£140	341	£280	373	£55
8	£20	60	£50	107	£30	153	£30	207	£75	258	£35	304	£50	342	£60	374	£220
10	£22	61	£100	108	£85	154	£150	208	£55	259	£200	305	£1200	343	£50	375	£24
11	£40	62	£65	109	£90	158	£70	209	£60	260	£200	306	£55	344	£70	376	£200
12	£900	63	£70	110	£50	161	£85	210	£40	261	£70	307	£1500	345	£50	377	£100
13	£800	64	£30	111	£200	162	£70	211	£35	262	£30	308	£700	346	£35	378	£300
15	£220	65	£140	112	£30	163	£75	212	£55	263	£26	309	£130	347	£80	379	£260
16	£200	66	£80	113	£130	164	£35	215	£30	264	£110	310	£70	348	£55	380	£220
17	£60	67	£240	114	£80	165	£55	216	£40	265	£30	311	£22	349	£130	381	£110
18	£65	68	£220	115	£60	166	£28	217	£120	266	£30	312	£50	350	£50	382	£22
19	£70	69	£200	116	£130	167	£65	218	£24	267	£50	313	£30	351	£160	384	£40
20	£75	70	£90	118	£280	168	£150	219	£50	268	£30	314	£70	352	£50	385	£45
21	£60	71	£35	119	£30	169	£70	220	£40	269	£70	316	£35	353	£360	386	£130
22	£50	72	£75	120	£45	170	£10	221	£80	270	£50	317	£50	354	£50	387	£20
23	£70	74	£35	121	£95	171	£50	222	£40	271	£45	318	£260	355	£1800	388	£130
24	£40	75	£45	122	£120	172	£85	223	£110	272	£35	319	£20	356	£100	389	£130
25	£75	76	£30	123	£85	173	£35	224	£150	273	£55	321	£540	357	£170	390	£80
26	£30	77	£45	124	£200	174	£50	225	£40	274	£35	322	£480	358	£320	391	£180
27	£220	78	£20	125	£70	175	£85	226	£40	275	£40	323	£190	359	£90	392	£100
28	£75	79	£24	126	£280	176	£100	227	£65	276	£130	324	£300	361	£45	393	£70
29	£70	80	£40	127	£55	178	£60	228	£60	277	£20	325	£170	362	£100	394	£110
30	£95	81	£20	128	£20	179	£30	229	£35	278	£140	326	£240	363	£65	395	£220
33	£440	82	£60	129	£55	180	£45	230	£45	280	£850	327	£720	364	£320	396	£170
34	£260	83	£50	130	£26	181	£30	233	£35	281	£95	328	£600	365	£170	397	£170
35	£480	84	£90	131	£50	182	£55	234	£260	282	£300	329	£160	366	£45	398	£170
36	£280	85	£65	132	£28	183	£45	235	£22	283	£220	330	£170	367	£200	399	£60
37	£100	86	£20	133	£70	185	£200	236	£40	284	£130	331	£110				
38	£60	87	£55	134	£85	186	£26	237	£55	285	£130	332	£260				
39	£400	88	£380	135	£160	187	£65	239	£30	286	£50	333	£380				
40	£260	89	£160	136	£440	190	£120	240	£85	287	£35	334	£100				
41	£26	90	£600	137	£220	191	£140	241	£280	288	£95	335	£100				
42	£10	91	£950	138	£170	192	£30	242	£90	289	£85						
44	£14	92	£110	139	£110	193	£20	243	£160	290	£500						
45	£45	93	£20	140	£85	194	£420	245	£80	291	£380						
46	£65	95	£1100	141	£85	195	£10	246	£150	292	£340						
47	£18	96	£360	142	£160	196	£22	247	£35	293	£80						
48	£65	97	£300	143	£460	197	£30	248	£300	294	£360						
49	£60	98	£280	144	£70	199	£50	249	£100	295	£140						
50	£100	99	£170	145	£45	200	£35	250	£180	296	£60						

Next Sale

Bedford Auction Centre
Friday 17th May 2024 | Commencing at 10.30am

Visit our website for full details
www.peacockauction.co.uk

Don't miss a bid!

Sign up for our free email Lot Alerts



Sign up for Lot Alerts

Your primary interest...

Keywords: Matching:

Name this lot alert

Sign up for Lot Alerts

Your primary interest...

- > Vehicles
- > Bedford Weekly Auctions
- > Commercial Auctions
- > Leamington Spa Weekly Auctions
- > Specialist Auctions
- > Sporting Goods Auctions
- > St Neots Weekly Auctions

Sign up for Lot Alerts

Your primary interest
> Bedford Weekly Auctions

Refine? (optional)
Saleroom 4

Keywords: Matching:

Name this lot alert

peacockauction.co.uk



Jewellery, Coins & Watches

TO BE SOLD BY LIVE AUCTION

Friday 1st March 2024

Commencing after 2pm

Viewing:

Friday 23rd February 9am to 8pm

Saturday 24th February 9am to 1pm

Thursday 29th February 9am to 5pm

Morning of sale from 9am to 10:30am

Bedford Auction Centre

Wallis Way, Bedford, Bedfordshire, MK42 0PE
01234 266 366 or info@peacockauction.co.uk

peacockauction.co.uk